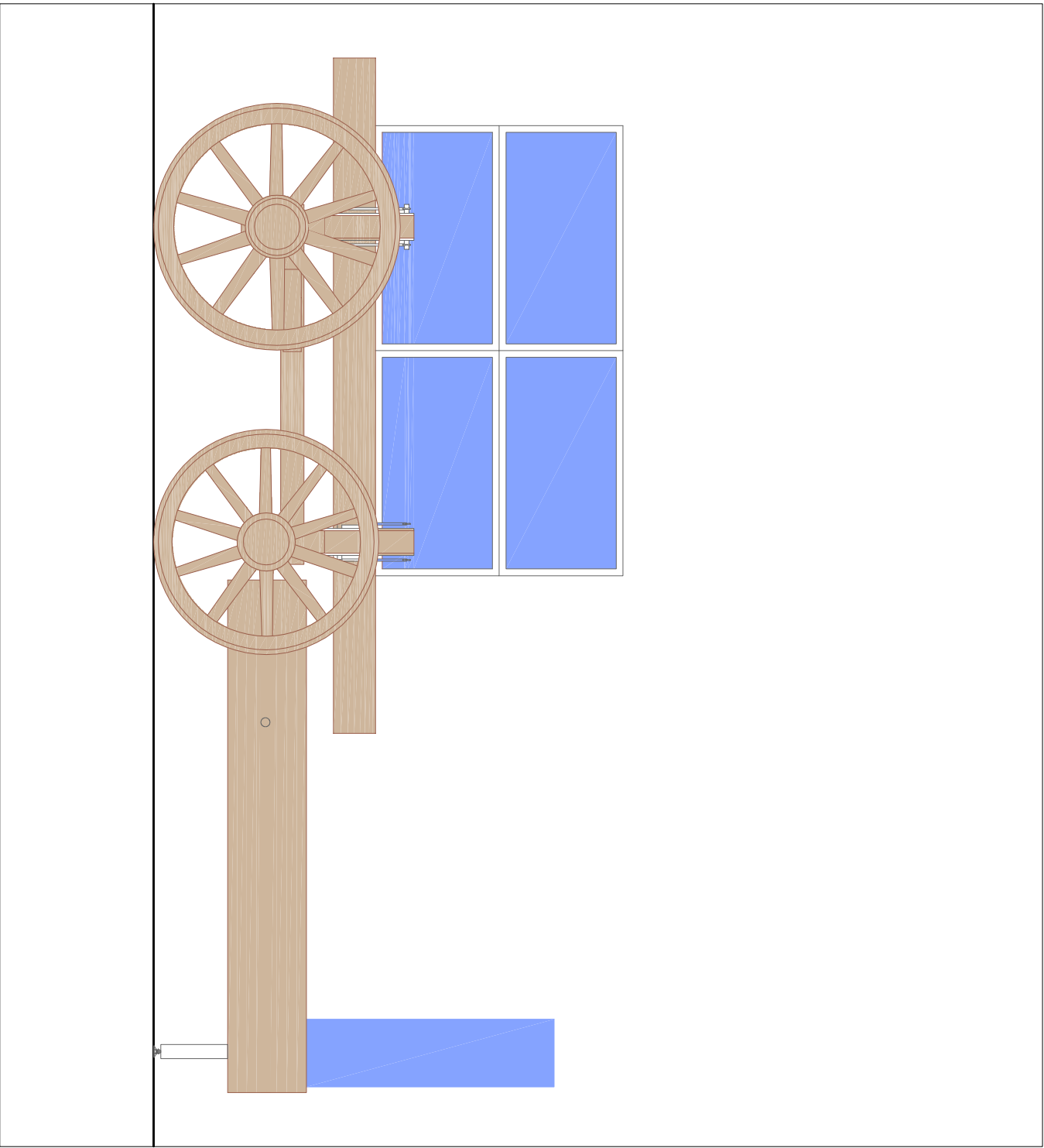
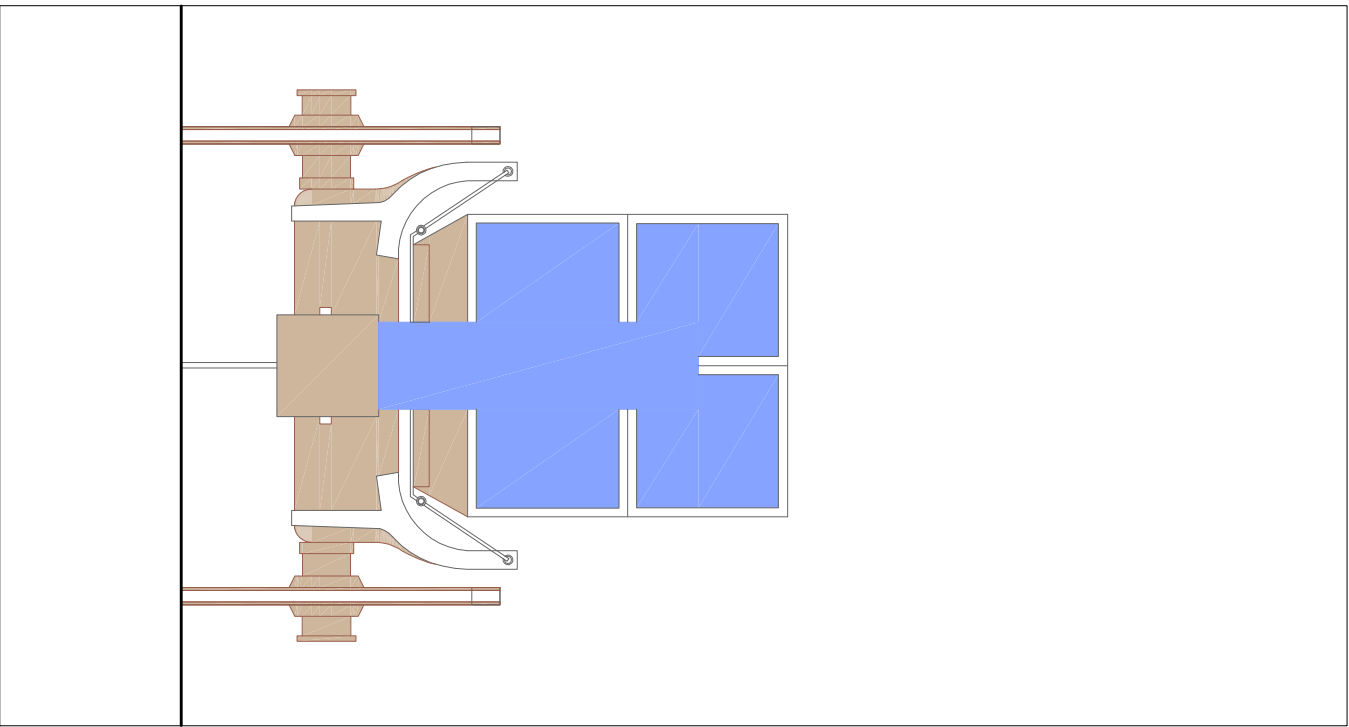


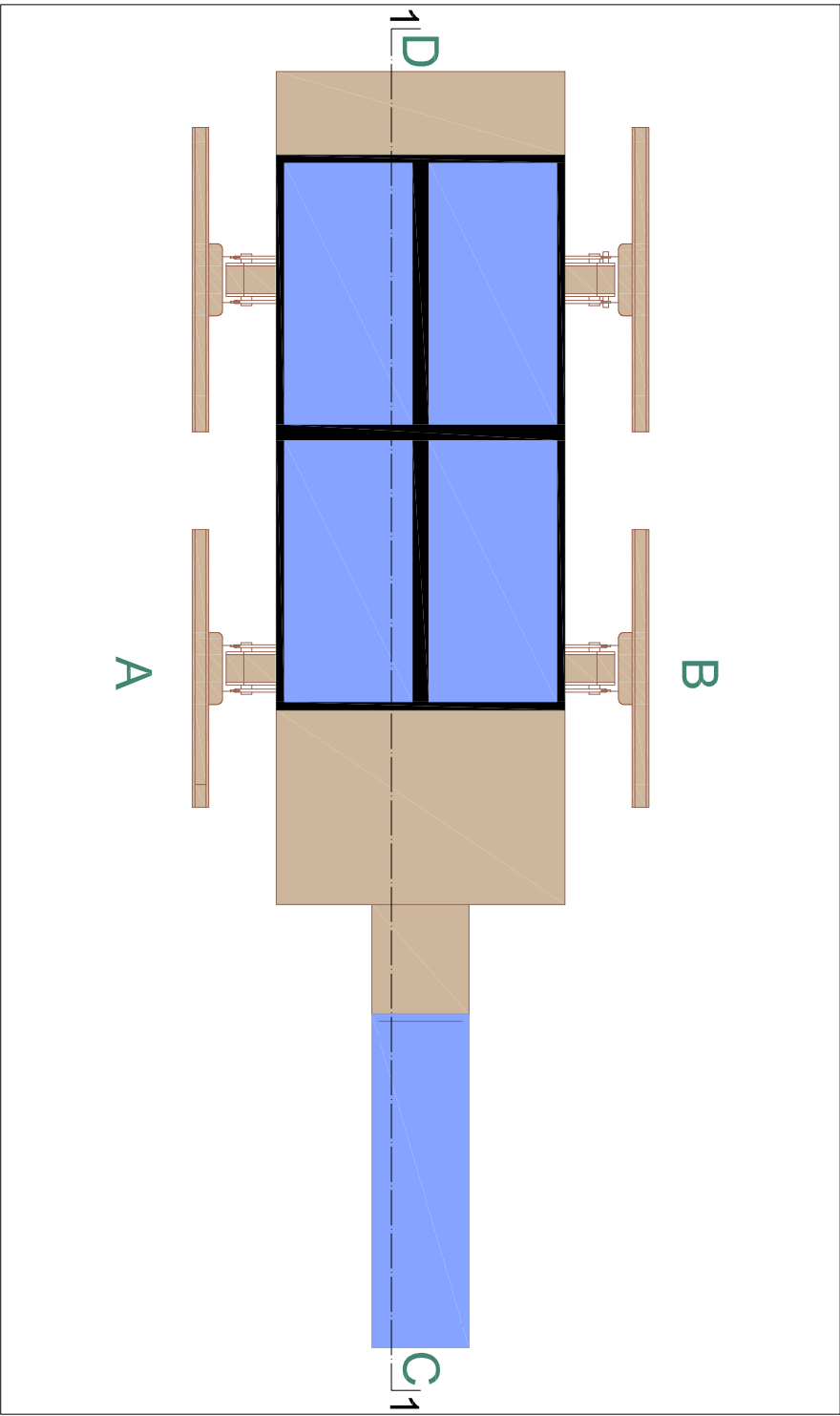
Prospetto D



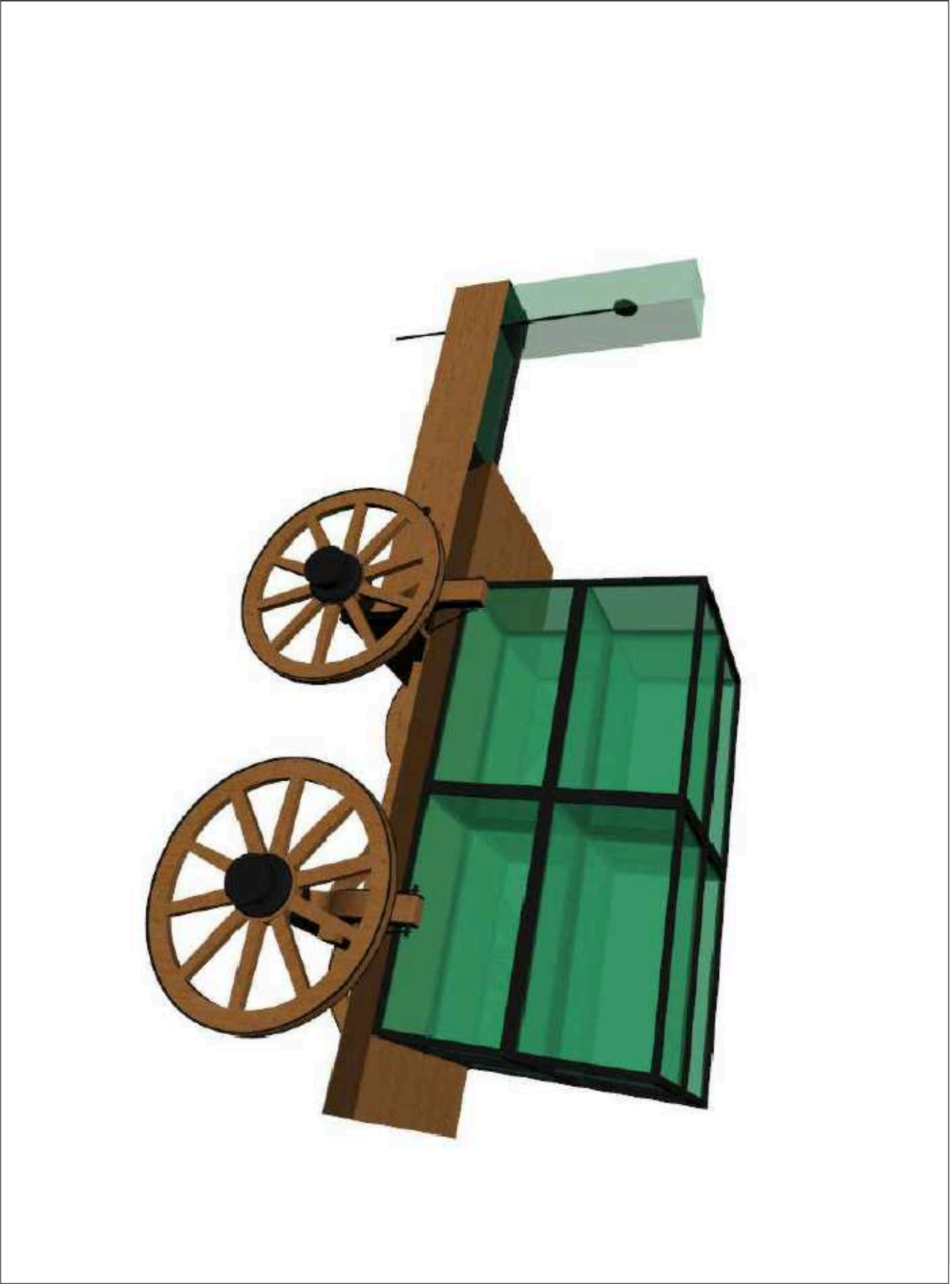
Prospetto A



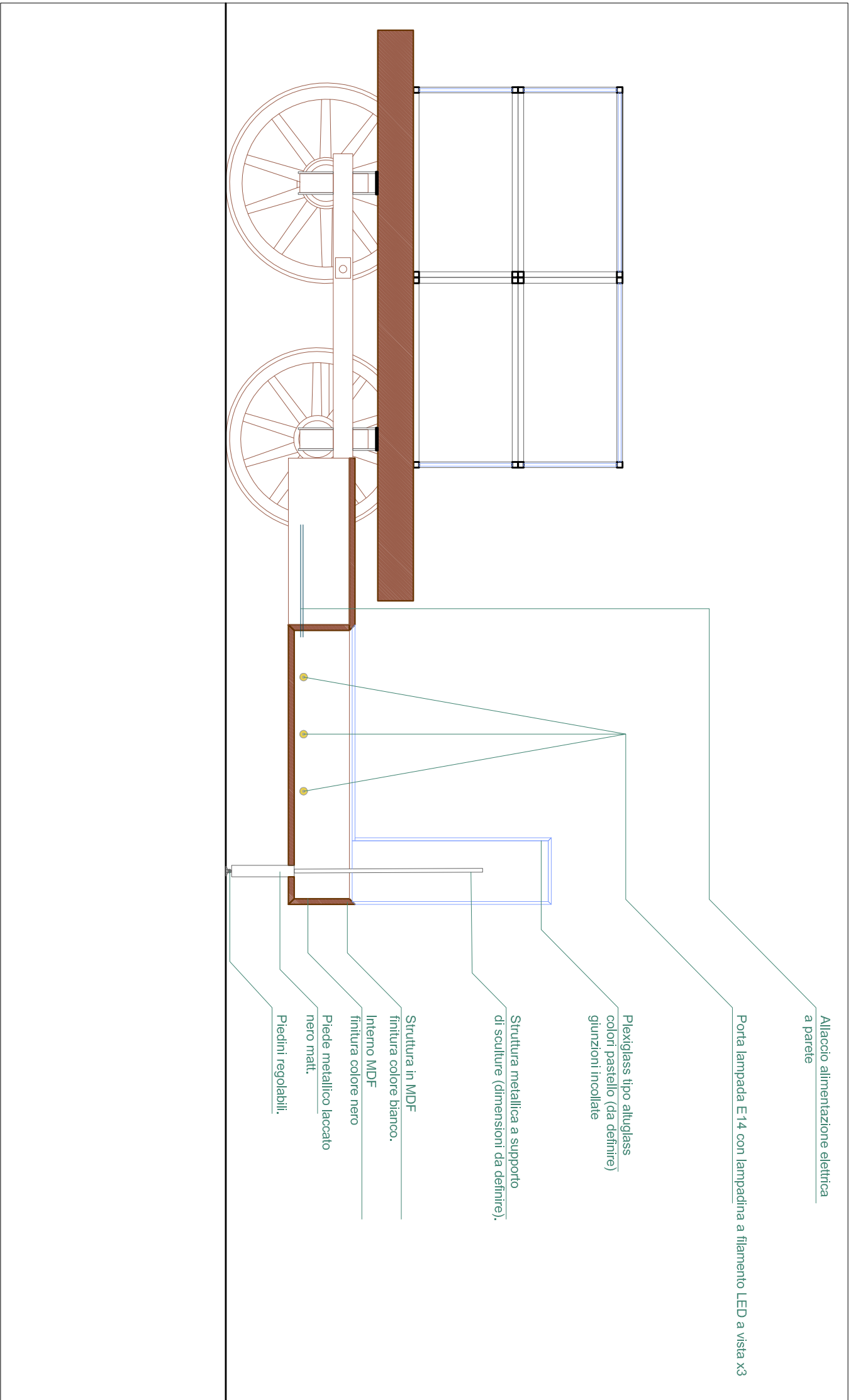
Prospetto C



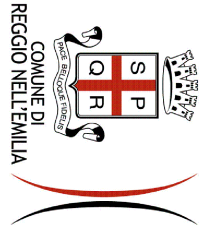
Pianta



Vista



Sezione 1



COMUNE DI REGGIO EMILIA
Area Competitività e Innovazione Sociale
Palazzo Ancini, via Farini 1/A - 42121 Reggio Emilia
Tel. 0522/455539 fax 0522.434255



Sistema museale - Palazzo dei Musei

**PROGETTO DI RIQUALIFICAZIONE
APPARATI ALLESTITIVI E TECNOLOGICI**



LR n. 18 / 2000 - Norme in materia di biblioteche, archivi storici, musei e beni culturali - Piano 2017

Il Dirigente competente e Responsabile del Procedimento
arch. Massimo Magagnoli
Il funzionario tecnico
arch. Elisa Pedroni

titolo VETRINA CARRO

data NOVEMBRE 2017 scala 1:200

tavola **ALL. 1**